

Adapter for BPCS

Seamless Integration into BPCS

Over time you've made a significant information technology investment into the operations of your manufacturing company by acquiring BPCS, the feature rich ERP package from Infor. Continuing to realize return on your ERP investment becomes challenging in light of any number of reasons:

- Evolving industry compliance
- Merger and acquisitions
- Additional process requirements beyond BPCS capabilities
- Disruptive technologies like RFID and Web Services
- Changing competitive landscapes
- Many others

There are many ways to deal with these types of business conditions, including a complete replacement of your ERP system, whereby swapping certain functionality for similar functionality only gains minimal improvements. That takes time and money that could be used for higher margin return. There is another way!

For more than 12 years, TransitionWorks (TWS) has certified the latest versions of BPCS and built a high speed adapter to integrate data in and out of BPCS. We have years of experience using the adapter to integrate BPCS to the shop floor, distribution center, to other ERP systems, to other process systems like WMS, MES, CRM, etc. and to the web.

TransitionWorks' Adapter for BPCS facilitates posting data into the BPCS ERP system and runs natively on the iSeries or Unix platform. It leverages the high speed framework of our TransitionWorks BPCS adapter technology (Application Integration Enabler–AIE) and bundles super fast posting programs that utilize the existing BPCS capabilities. The Adapter for BPCS (AFB) supports several versions of BPCS including: 4.05CD, 6.x, 8.x and ERP LX. It consists of a series of RPG ILE programs that either work with existing BPCS posting programs or interface directly with BPCS to provide information related to Inventory, Labor, and Order Management activities.

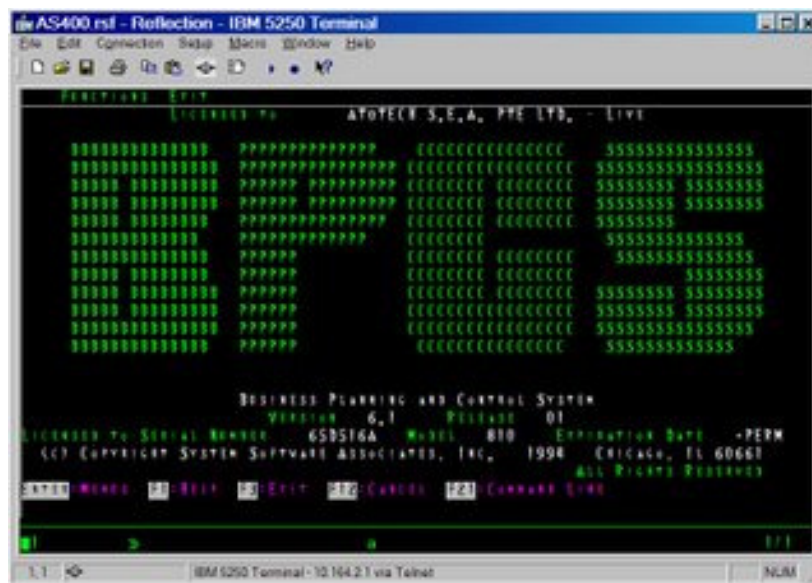
**Supported
BPCS
Transactions**



With its open XML, Web Service or fixed format messaging technique, it is the best available solution in the market to provide a seamless and fast interface to a BPCS environment. In fact, many of the leading integration infrastructure providers use TransitionWorks' Adapter for BPCS as their BPCS gateway.

Built for Growth

The Adapter for BPCS is built upon the TWS AIE platform. AIE is a message-oriented framework that sends and receives messages via a variety of optional methods including Websphere MQ queues and iSeries data queues. This approach provides a very stable and complete way of asynchronous and synchronous communication enabling support for both real time solutions, as well as, batch based systems. For data synchronization, AIE provides an optional database trigger processor that allows the definition of triggers on the server's native database that can be messaged to any external environment. This is usually used for event notification or data replication applications. AIE works natively with both the iSeries platform and DB2 as well as Unix with Informix or Oracle databases.



About TransitionWorks Software

TransitionWorks Software is dedicated to helping our customers improve efficiencies and simplify business processes. Since product inception in 1997, our TransitionWorks Software organization has accomplished this goal by iteratively developing, delivering and supporting a set of solutions that help manufacturing/distribution companies simplify and automate key supply chain processes using many forms of Automated Identification and Data Capture (AIDC) technologies including RFID, barcodes, sensor technology, and PLC's. With proven, successful implementations worldwide, TransitionWorks' premier solutions are the system of choice for many leading companies in the world.

TransitionWorks Software Solutions:

Inventory Visibility
Sales Visibility

Asset Visibility
Custom Process Solution

Integration Capabilities – BPCS,
SAP, Oracle, JDE, Legacy, etc.

For more information on TransitionWorks Software please visit us at www.transitionworkssoftware.com, email info@transitionworkssoftware.com or give us a call at (336)-885-1373.